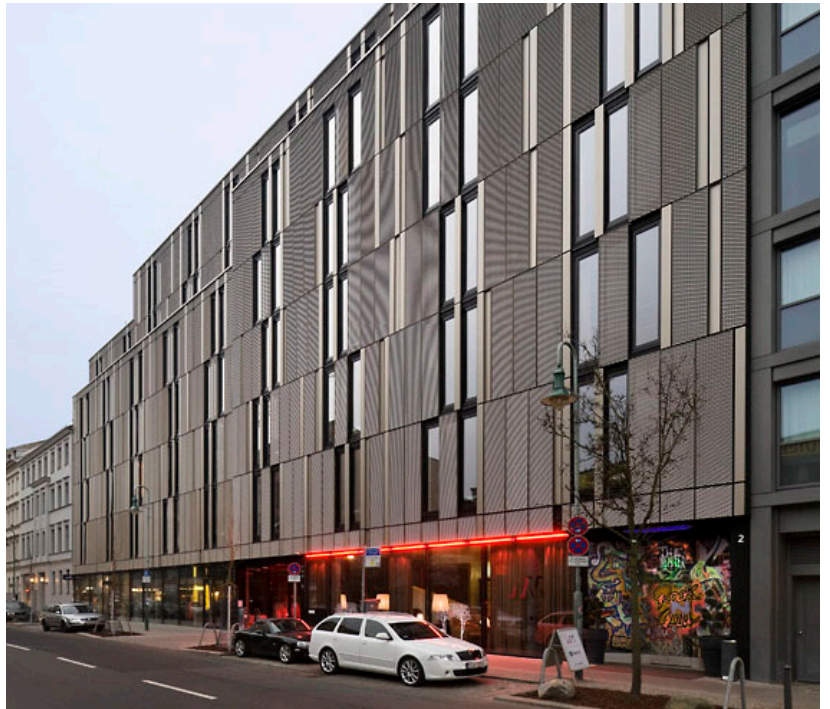


New Construction Hotel
The Weinmeister

Site: Berlin
Client: Müller-Spreer & Co.
Weinmeisterstr. KG
Services: LPH 6-9
Duration: 2008-2010
Cost: 7 Mio. €
Photos: diephotodesigner



Timelessly Contemporary

With success, BFA has replaced the last vacant, uncultivated plot of land on Weinmeisterstraße in Berlin-Mitte, with a contemporary boutique hotel. "The Weinmeister" stands out from the surrounding buildings with a consistent contrast to classic perforated façades. The different anodized, expanded metal elements structure the Weinmeister's state of the art façade. Anodizing increases resistance to corrosion and wear, and provides better adhesion for paint primers and glues. On the side facing away from the street, the façade protrudes out thus establishing a contrast to the smooth and flat side of the street. The fully glazed ground floor allows glimpses into the common areas of the hotel.

